



Specifications

Package	LHOR	
Frequency Range (fo)	0.500MHz ~ 160.000MHz	
Logic Family	HCMOS	
Freq. Stability (Df/fo)	±100ppm	
Aging/Year (fa)	5ppm	
Temp. Range	Operating (TOPR)	0°C ~ +70°C
	Storage (TSTG)	-55°C ~ +125°C
Phase Jitter RMS (12-20MHz)	1pS Max	

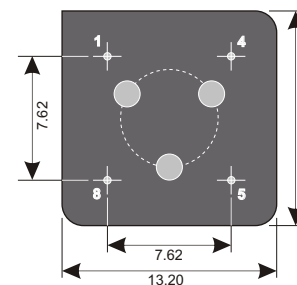
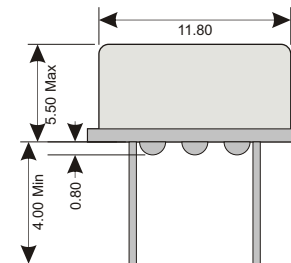
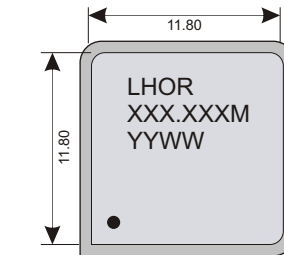
Electrical - HCMOS

Power Supply	Voltage (VDD)	3.3 VDC ±10%
	INPUT Current 0.5MHz ~ 24.9MHz 25.0MHz ~ 99.9MHz	20mA Max 40mA Max
Stand-by current		10uA Max
Output	Load	15pF Max
	Voltage (VOL Max.)	0.1 Vdd
	Voltage (VOH Min.)	0.9 Vdd
Start-up Time		1mS Typ; 10mS Max
Rise (TR) & Fall (TF) Time 0.5MHz ~ 4.9MHz 25.0MHz ~ 99.9MHz 100.0MHz ~ 160.0MHz		10nS Max 5nS Max 4nS Max
Symmetry/Duty		45/55 @ 50% Level

Enable / Disable

U Option (Page 2)	Default	U2
70%Vcc Min (Pin 1)	Enabled Active (Pin 5)	Disabled High Z (Pin 5)
N/C or Open (Pin 1)	Enabled Active (Pin 5)	Disabled High Z (Pin 5)
30%Vcc Max (Pin 1)	Disabled High Z (Pin 5)	Enabled Active (Pin 5)
Enable Time	10mS Max	10mS Max
Disable Time	100nS Max	100S Max

Dimensions (mm)



Lead Free



EU RoHS
EU RoHS
Leaf
Compliant



Reach
Compliant



China
RoHS
Compliant



Conflict
Minerals
Free

Connections

Pin 1	Enable / Disable
Pin 4	Ground
Pin 5	Output
Pin 8	Vdd



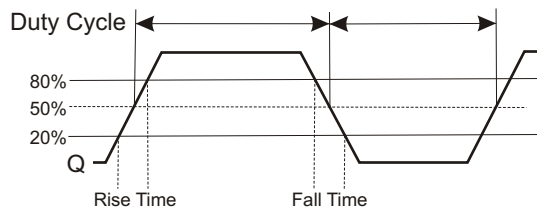
Absolute Maximum Ratings

Maximum Storage Temp	-40°C to +90°C
Voltage (VDD)	4.0 VDC
Input Voltage	0.5Vdc ~ Vdd+0.5Vdc

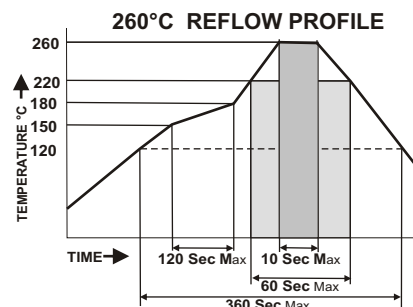
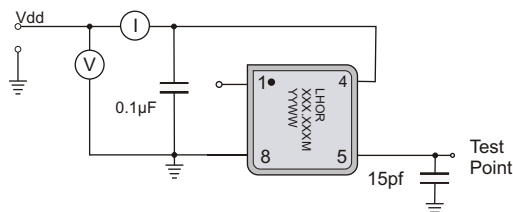
Environmental And Mechanical

Temperature	10 Cycles of -30°C (30Mins), Normal (1Hr), 85°C (30Mins), Normal (1Hr)
Shock	Accelerated at 1000G for 1mS in each perpendicular axis.
Vibration	4 Cycles of 20G acceleration at 20 - 2,000Hz within 4 Minutes in each perpendicular axis.
Solder	Peak Temperature of 260°C Max for 10 Seconds with preheat of 160°C for 90±10% for 10 Seconds for a Maximum of 2 Cycles.

Waveform



Test Circuit



Part Number

LHOR - XXX.XXX M-SX RX UX

	OP Temp	Stability	Enable / Disable
R4	-20 ~ +70°C	S1	±50ppm
R6	-40 ~ +85°C	S2	±25ppm
RC	-55°C ~ +125°C	S3	±10ppm
RC	Custom Temp.	SC	Cust. Stability

Enable / Disable: **Default:** Enabled Hi
 Operating Temperature Range: **Default:** 0°C ~ +70°C
 Stability: **Default:** ±100ppm
 Frequency: 0.500MHz ~160.000MHz; must be specified
 Standard RoHS Compliant 13.2 x 13.2mm (8)Pin Half-Size Dip Thru-Hole Oscillator

Example: **LHOR-125.000M** 125.000MHz, 3.3V ±100ppm Oscillator operating at 0°C ~ +70°C
 Example: **LHOR-125.000M-S2R6** 125.000MHz, 3.3V ±25ppm Oscillator operating at -40°C ~ +85°C

SPECIFICATIONS ARE SUBJECT TO CHANGE WITHOUT NOTICE.

PLEASE CONTACT YOUR IMPACT SALES REPRESENTATIVE FOR CUSTOM SPECIFICATIONS, CURRENT INFORMATION, PRICING AND AVAILABILITY.