



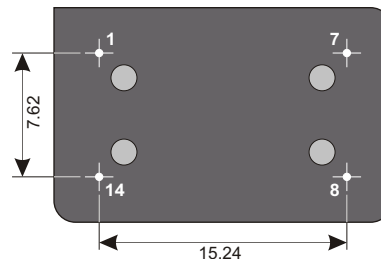
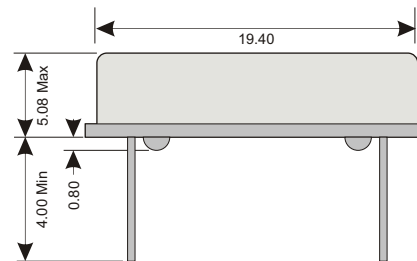
Specifications

| | | |
|-----------------------------|-----------------------|----------------|
| Package | LXOR | |
| Frequency Range (fo) | 0.500MHz ~ 160.000MHz | |
| Logic Family | HCMOS | |
| Freq. Stability (Df/fo) | ±100ppm | |
| Aging/Year (fa) | 5ppm | |
| Temp. Range | Operating (TOPR) | 0°C ~ +70°C |
| | Storage (TSTG) | -40°C ~ +100°C |
| Phase Jitter RMS (12-20MHz) | 1pS Max | |

Electrical - HCMOS

| | | |
|----------------------------|--------------------|-------------------|
| Power Supply | Voltage (VDD) | 3.3 VDC ±10% |
| | INPUT Current | |
| | 0.5 ~ 25.0MHz | 10mA Max |
| | 25.1 ~ 70.0MHz | 20mA Max |
| | 70.1 ~ 100.0MHz | 30mA Max |
| 100.1 ~ 160.0MHz | 40mA Max | |
| Stand-by current | 10uA Max | |
| Output | Load | 15pF Max |
| | Voltage (VOL Max.) | 0.1 Vdd |
| | Voltage (VOH Min.) | 0.9 Vdd |
| Start-up Time | 1mS Typ; 10mS Max | |
| Rise (TR) & Fall (TF) Time | 0.5 ~ 25.0MHz | 10nS Max |
| | 25.1 ~ 70.0MHz | 6nS Max |
| | 70.1 ~ 100.0MHz | 5nS Max |
| | 100.1 ~ 160.0MHz | 3nS Max |
| | Symmetry/Duty | 45/55 @ 50% Level |

Dimensions (mm)



Lead Free



EU RoHS
EU RoHS
Leaf
Compliant



Reach
Compliant



China
RoHS
Compliant



Conflict
Minerals
Free

Enable / Disable

| U Option (Page 2) | Default | U2 |
|---------------------|-------------------------|-------------------------|
| 70%Vcc Min (Pin 1) | Enabled Active (Pin 8) | Disabled High Z (Pin 8) |
| N/C or Open (Pin 1) | Enabled Active (Pin 8) | Disabled High Z (Pin 8) |
| 30%Vcc Max (Pin 1) | Disabled High Z (Pin 8) | Enabled Active (Pin 8) |
| Enable Time | 10mS Max | 10mS Max |
| Disable Time | 100nS Max | 100nS Max |

Connections

| | |
|--------|------------------|
| Pin 1 | Enable / Disable |
| Pin 7 | Ground |
| Pin 8 | Output |
| Pin 14 | Vdd |



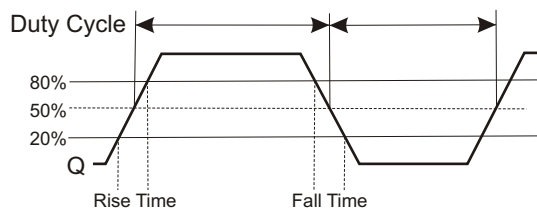
Absolute Maximum Ratings

| | |
|----------------------|---------------------|
| Maximum Storage Temp | -55°C ~ +125°C |
| Voltage (VDD) | 4.0 VDC |
| Input Voltage | 0.5Vdc ~ Vdd+0.5Vdc |

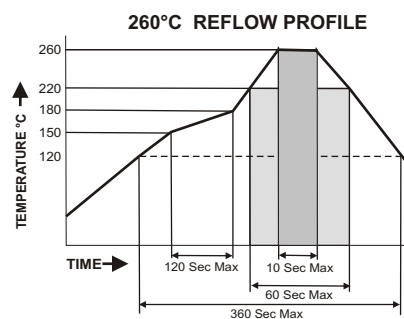
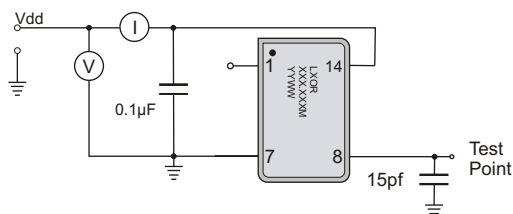
Environmental And Mechanical

| | |
|-------------|---|
| Temperature | 10 Cycles of -30°C (30Mins), Normal (1Hr), 85°C (30Mins), Normal (1Hr) |
| Shock | Accelerated at 1000G for 1mS in each perpendicular axis. |
| Vibration | 4 Cycles of 20G acceleration at 20 - 2,000Hz within 4 Minutes in each perpendicular axis. |
| Solder | Peak Temperature of 260°C Max for 10 Seconds with preheat of 160°C for 90±10% for 10 Seconds for a Maximum of 2 Cycles. |

Waveform



Test Circuit



Part Number

LXOR - XXX.XXX M-SX RX UX

OP Temp

| | |
|----|--------------|
| R4 | -20 ~ +70°C |
| R6 | -40 ~ +85°C |
| RC | Custom Temp. |

Stability

| | |
|----|-----------------|
| S1 | ±50ppm |
| S2 | ±25ppm |
| S3 | ±10ppm |
| SC | Cust. Stability |

Enable / Disable

| | |
|----|-----------|
| U2 | Lo Enable |
|----|-----------|

Enable / Disable: **Default:** Enabled Hi
 Operating Temperature Range: **Default:** 0°C ~ +70°C
 Stability: **Default:** ±100ppm
 Frequency: 0.500MHz ~160.000MHz; must be specified
 Standard RoHS Compliant 20.8 x 13.2mm (14)Pin Full-Size Dip Thru-Hole Oscillator

Example: **LXOR-125.000M** 125.000MHz, 3.3V ±100ppm Oscillator operating at 0°C ~ +70°C

Example: **LXOR-125.000M-S2R6** 125.000MHz, 3.3V ±25ppm Oscillator operating at -40°C ~ +85°C

SPECIFICATIONS ARE SUBJECT TO CHANGE WITHOUT NOTICE.

PLEASE CONTACT YOUR IMPACT SALES REPRESENTATIVE FOR CUSTOM SPECIFICATIONS, CURRENT INFORMATION, PRICING AND AVAILABILITY.