



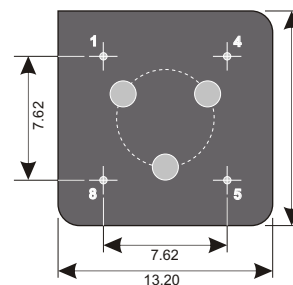
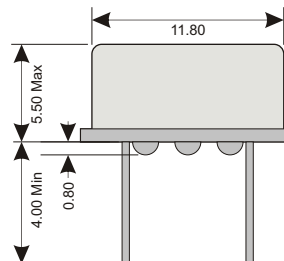
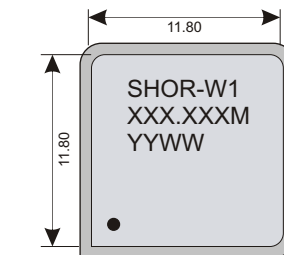
### Specifications

Package	SHOR-W1		
Frequency Range (fo)	0.500MHz ~ 125.000MHz		
Logic Family	TTL		
Freq. Stability (Df/fo)	±100ppm		
Aging/Year (fa)	5ppm		
Temp. Range	Operating (TOPR)	0°C ~ +70°C	-55°C ~ +125°C
	Storage (TSTG)	-40°C ~ +100°C	-65°C ~ +150°C
Phase Jitter RMS (12-20MHz)	1pS Max		

### Electrical - TTL

Power Supply	Voltage (VDD)	5.0VDC ±10%	
	INPUT Current	0.5 ~ 25.0MHz	30mA Max
		25.1 ~ 70.0MHz	70mA Max
		70.1 ~ 100.0MHz	80mA Max
		100.0MHz ~ 125.0MHz	90mA Max
Stand-by current	10uA Max		
Output	Load	10TTL	
	Voltage (VOL Max.)	0.45 Vcc Max	
	Voltage (VOH Min.)	2.40 Vcc Min	
Start-up Time	1mS Typ; 10mS Max		
Rise (TR) & Fall (TF) Time	0.5 ~ 25.0MHz	10nS Max	
	25.1 ~ 70.0MHz	5nS Max	
	70.1 ~ 125.0MHz	4nS Max	
Symmetry/Duty	45/55 @ 50% Level		

### Dimensions (mm)



EU RoHS  
EU RoHS  
Leaf  
Compliant



Reach  
Compliant



China  
RoHS  
Compliant



Conflict  
Minerals  
Free

### Enable / Disable

U Option (Page 2)	Default	U2
70%Vcc Min (Pin 1)	Enabled Active (Pin 5)	Disabled High Z (Pin 5)
N/C or Open (Pin 1)	Enabled Active (Pin 5)	Disabled High Z (Pin 5)
30%Vcc Max (Pin 1)	Disabled High Z (Pin 5)	Enabled Active (Pin 5)
Enable Time	10mS Max	10mS Max
Disable Time	100nS Max	100S Max

### Connections

Pin 1	Enable / Disable
Pin 4	Ground
Pin 5	Output
Pin 8	Vdd



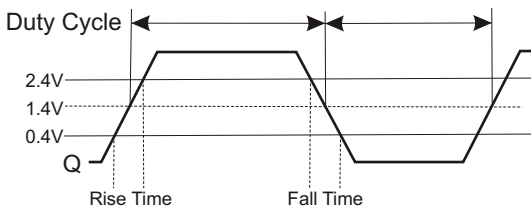
### Absolute Maximum Ratings

Maximum Storage Temp	-65°C ~ +165°C
Voltage (VDD)	6.5 VDC
Input Voltage	-0.5Vdc ~ Vdd+0.5Vdc

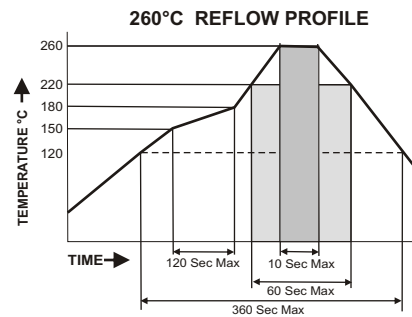
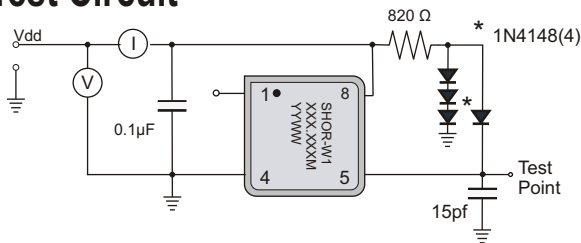
### Environmental And Mechanical

Temperature	10 Cycles of -30°C (30Mins), Normal (1Hr), 85°C (30Mins), Normal (1Hr)
Shock	Accelerated at 1000G for 1mS in each perpendicular axis.
Vibration	4 Cycles of 20G acceleration at 20 - 2,000Hz within 4 Minutes in each perpendicular axis.
Solder	Peak Temperature of 260°C Max for 10 Seconds with preheat of 160°C for 90±10% for 10 Seconds for a Maximum of 2 Cycles.

### Waveform



### TTL Test Circuit



### Part Number

**SHOR-W1 - XXX.XXX M-SX RX UX**

Stability		OP Temp		Enable / Disable	
S1	±50ppm	R8	-55°C ~ +125°C	U2	Lo Enable
S2	±25ppm	RC	Custom Temp.		
S3	±10ppm				
SC	Cust. Stability				

- Enable/Disable: **Default:** Enabled Hi
- Operating Temperature Range: **Default:** 0°C ~ +70°C
- Stability: **Default:** ±100ppm
- Frequency: 0.500MHz ~125.000MHz; must be specified
- Standard RoHS Compliant 13.2 x 13.2mm (8)Pin Half-Size Dip Thru-Hole Oscillator

Example: **SHOR-W1-100.000M** 100.000MHz, 5.0V ±100ppm Oscillator operating at 0°C ~70°C  
 Example: **SHOR-W1-100.000M-S2R8** 100.000MHz, 5.0V ±25ppm Oscillator operating at -55°C ~ +125°C, (-65°C ~ +150°C Storage)

SPECIFICATIONS ARE SUBJECT TO CHANGE WITHOUT NOTICE.

PLEASE CONTACT YOUR IMPACT SALES REPRESENTATIVE FOR CUSTOM SPECIFICATIONS, CURRENT INFORMATION, PRICING AND AVAILABILITY.