



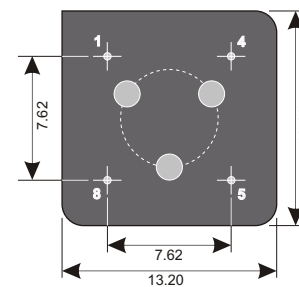
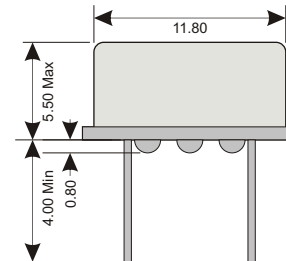
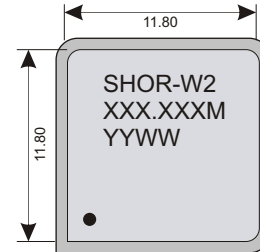
Specifications

Package	SHOR-W2		
Frequency Range (fo)	0.500MHz ~ 160.000MHz		
Logic Family	HCMOS		
Freq. Stability (Df/fo)	±100ppm		
Aging/Year (fa)	5ppm		
Temp. Range	Operating (TOPR)	0°C ~ +70°C	-55°C ~ +125°C
	Storage (TSTG)	-40°C ~ +100°C	-65°C ~ +150°C
Phase Jitter RMS (12-20MHz)	1pS Max		

Electrical - HCMOS

Power Supply	Voltage (VDD)	5.0VDC ±10%
	INPUT Current	
	0.5 ~ 25.0MHz	20mA Max
	25.1 ~ 70.0MHz	40mA Max
	70.1 ~ 100.0MHz	45mA Max
100.0MHz ~ 125.0MHz	50mA Max	
Stand-by current	10uA Max	
Output	Load	50pF
	Voltage (VOL Max.)	0.1Vdd Max
	Voltage (VOH Min.)	0.9Vdd Min
Start-up Time	1mS Typ; 10mS Max	
Rise (TR) & Fall (TF) Time	0.5 ~ 25.0MHz	10nS Max
	25.1 ~ 70.0MHz	6nS Max
	70.1 ~ 100.0MHz	4nS Max
	100.0 ~ 160.0MHz	2nS Max
	Symmetry/Duty	45/55 @ 50% Level

Dimensions (mm)



Lead Free



EU RoHS
EU RoHS
Leaf
Compliant



Reach
Compliant



China
RoHS
Compliant



Conflict
Minerals
Free

Enable / Disable

U Option (Page 2)	Default	U2
70%Vcc Min (Pin 1)	Enabled Active (Pin 5)	Disabled High Z (Pin 5)
N/C or Open (Pin 1)	Enabled Active (Pin 5)	Disabled High Z (Pin 5)
30%Vcc Max (Pin 1)	Disabled High Z (Pin 5)	Enabled Active (Pin 5)
Enable Time	10mS Max	10mS Max
Disable Time	100nS Max	100S Max

Connections

Pin 1	Enable / Disable
Pin 4	Ground
Pin 5	Output
Pin 8	Vdd



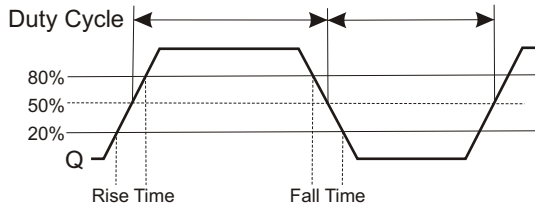
Absolute Maximum Ratings

Maximum Storage Temp	-65°C ~ +165°C
Voltage (VDD)	6.5 VDC
Input Voltage	-0.5Vdc ~ Vdd+0.5Vdc

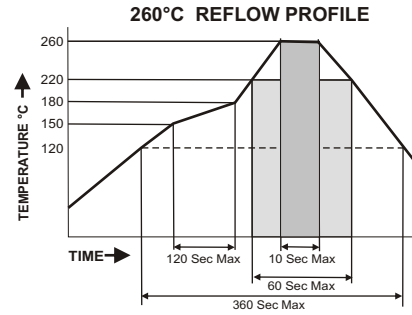
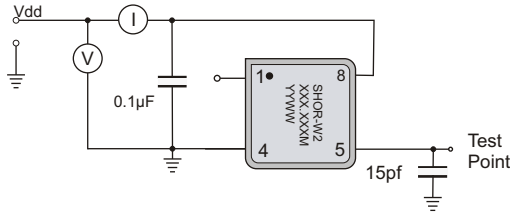
Environmental And Mechanical

Temperature	10 Cycles of -30°C (30Mins), Normal (1Hr), 85°C (30Mins), Normal (1Hr)
Shock	Accelerated at 1000G for 1mS in each perpendicular axis.
Vibration	4 Cycles of 20G acceleration at 20 - 2,000Hz within 4 Minutes in each perpendicular axis.
Solder	Peak Temperature of 260°C Max for 10 Seconds with preheat of 160°C for 90±10% for 10 Seconds for a Maximum of 2 Cycles.

Waveform



Test Circuit



Part Number

SHOR-W2 - XXX.XXX M-SX RX UX

Stability		OP Temp		Enable / Disable	
S1	±50ppm	R8	-55°C ~ +125°C	U2	Lo Enable
S2	±25ppm	RC	Custom Temp.		
S3	±10ppm				
SC	Cust. Stability				

- Enable / Disable: **Default:** Enabled Hi
- Operating Temperature Range: **Default:** 0°C ~ +70°C
- Stability: **Default:** ±100ppm
- Frequency: 0.500MHz ~160.000MHz; must be specified
- Standard RoHS Compliant 13.2 x 13.2mm (8)Pin Half-Size Dip Thru-Hole Oscillator

Example: **SHOR-W2-125.000M** 125.000MHz, 5.0V ±100ppm Oscillator operating at 0°C ~ +70°C
 Example: **SHOR-W2-125.000M-S2R8** 125.000MHz, 5.0V ±25ppm Oscillator operating at -55°C ~ +125°C (-65°C ~ +150°C)