



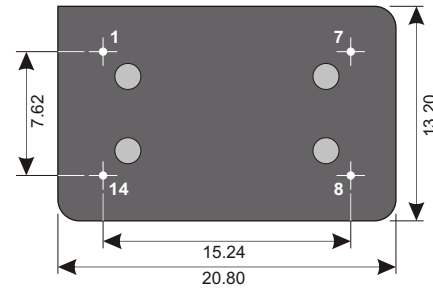
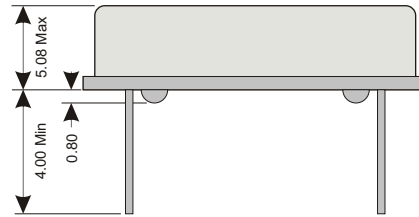
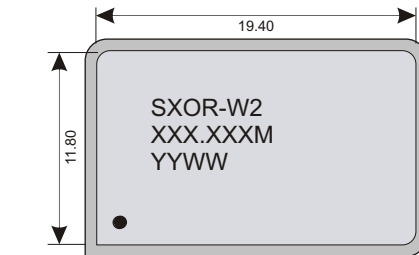
### Specifications

Package	SXOR-W2		
Frequency Range (fo)	0.500MHz ~ 160.000MHz		
Logic Family	HCMOS		
Freq. Stability (Df/fo)	±100ppm		
Aging/Year (fa)	5ppm		
Temp. Range	Operating (TOPR)	0°C ~ +70°C	-55°C ~ +125°C
	Storage (TSTG)	-55°C ~ +125°C	-65°C ~ +150°C
Phase Jitter RMS (12-20MHz)	1pS Max		

### Electrical - HCMOS

Power Supply	Voltage (VDD)	5.0VDC ±10%
	INPUT Current	
	0.5 ~ 20.0MHz	20mA Max
	20.1 ~ 70.0MHz	40mA Max
	70.1 ~ 100.0MHz	45mA Max
	100.0MHz ~ 160.0MHz	50mA Max
Stand-by current	10uA Max	
Output	Load	50pF
	Voltage (VOL Max.)	0.5 V Max
	Voltage (VOH Min.)	4.5 V Min
Start-up Time	1mS Typ; 10mS Max	
Rise (TR) & Fall (TF) Time	0.5 ~ 25.0MHz	10nS Max
	25.1 ~ 70.0MHz	6nS Max
	70.1 ~ 100.0MHz	4nS Max
	100.1 ~ 160.0MHz	2nS Max
Symmetry/Duty	45/55 @ 50% Level	

### Dimensions (mm)



Lead Free



EU RoHS  
EU RoHS  
Leaf  
Compliant



Reach  
Compliant



China  
RoHS  
Compliant



Conflict  
Minerals  
Free

### Enable / Disable

U Option (Page 2)	Default	U2
70%Vcc Min (Pin 1)	Enabled Active (Pin 8)	Disabled High Z (Pin 8)
N/C or Open (Pin 1)	Enabled Active (Pin 8)	Disabled High Z (Pin 8)
30%Vcc Max (Pin 1)	Disabled High Z (Pin 8)	Enabled Active (Pin 8)
Enable Time	10mS Max	10mS Max
Disable Time	100nS Max	100nS Max

### Connections

Pin 1	Enable / Disable
Pin 7	Ground
Pin 8	Output
Pin 14	Vdd



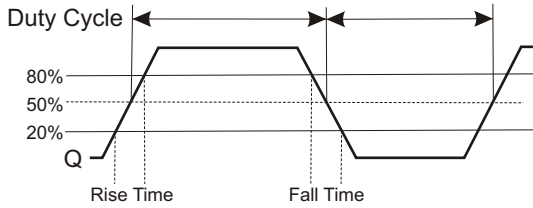
### Absolute Maximum Ratings

Maximum Storage Temp	-40°C to +90°C
Voltage (VDD)	4.0 VDC
Input Voltage	-0.5Vdc ~ Vdd+0.5Vdc

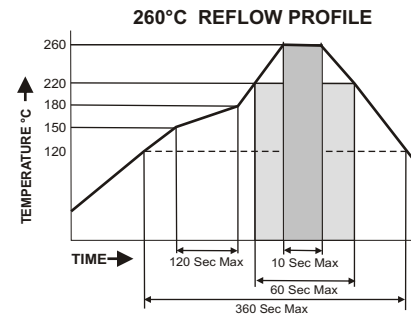
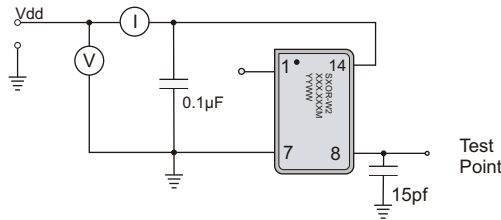
### Environmental And Mechanical

Temperature	10 Cycles of -30°C (30Mins), Normal (1Hr), 85°C (30Mins), Normal (1Hr)
Shock	Accelerated at 1000G for 1mS in each perpendicular axis.
Vibration	4 Cycles of 20G acceleration at 20 - 2,000Hz within 4 Minutes in each perpendicular axis.
Solder	Peak Temperature of 260°C Max for 10 Seconds with preheat of 160°C for 90±10% for 10 Seconds for a Maximum of 2 Cycles.

### Waveform



### Test Circuit



### Part Number

**SXOR-W2 - XXX.XXX M-SX RX UX**

#### Stability

S1	±50ppm
S2	±25ppm
S3	±10ppm
SC	Cust. Stability

#### OP Temp

R4	-20 ~ +70°C
R6	-40 ~ +85°C
R7	-55 ~ +125°C
RC	Cust. Temp.

#### Enable / Disable

U2	Lo Enable
----	-----------

Enable / Disable: **Default:**  
 Operating Temperature Range: **Default:** 0°C ~ +70°C  
 Stability: **Default:** ±100ppm  
 Frequency: 0.500MHz ~160.000MHz; must be specified  
 Standard RoHS Compliant 20.8 x 13.2mm (14)Pin Full-Size Dip Thru-Hole Oscillator

Example: **SXOR-W2-100.000M** 100.000MHz, 5.0V ±100ppm Oscillator operating at 0°C ~ +70°C  
 Example: **SXOR-W2-100.000M-S2R7** 100.000MHz, 5.0V ±25ppm Oscillator operating at -55°C ~ +125°C, (-65°C ~ +150°C Storage)

SPECIFICATIONS ARE SUBJECT TO CHANGE WITHOUT NOTICE.

PLEASE CONTACT YOUR IMPACT SALES REPRESENTATIVE FOR CUSTOM SPECIFICATIONS, CURRENT INFORMATION, PRICING AND AVAILABILITY.