



Specifications

Package		SXOR
Frequency Range (fo)		0.500MHz ~ 160.000MHz
Logic Family		HCMOS
Freq. Stability (Df/fo)		±100ppm
Aging/Year (fa)		5ppm
Temp. Range	Operating (TOPR)	0°C ~ +70°C
	Storage (TSTG)	-55°C ~ +125°C
Phase Jitter RMS (12-20MHz)		1pS Max

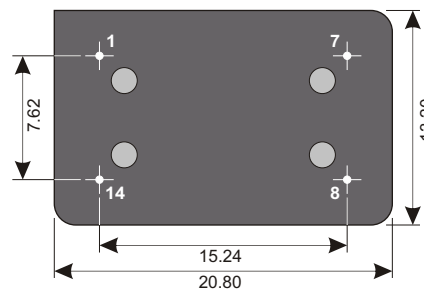
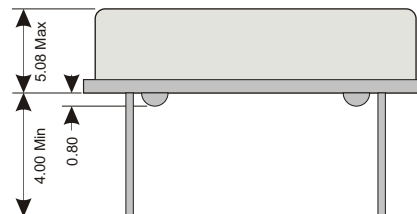
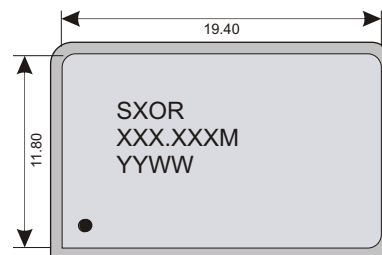
Electrical - HCMOS

Power Supply	Voltage (VDD)	5.0Vdc ±10%
	INPUT Current	
	0.5 ~ 20.0MHz	20mA Max
	20.1 ~ 70.0MHz	40mA Max
Stand-by current		10uA Max
Output	Load	15pF Max
	Voltage (VOL Max.)	0.1 Vdd
	Voltage (VOH Min.)	0.9 Vdd
Start-up Time		1mS Typ; 10mS Max
Rise (TR) & Fall (TF) Time		
	0.5 ~ 20.0MHz	10nS Max
	20.1 ~ 70.0MHz	6nS Max
	70.1 ~ 100.0MHz	4nS Max
Symmetry/Duty		45/55 @ 50% Level

Enable / Disable

U Option (Page 2)	Default	U2
70%Vcc Min (Pin 1)	Enabled Active (Pin 8)	Disabled High Z (Pin 8)
N/C or Open (Pin 1)	Enabled Active (Pin 8)	Disabled High Z (Pin 8)
30%Vcc Max (Pin 1)	Disabled High Z (Pin 8)	Enabled Active (Pin 8)
Enable Time	10mS Max	10mS Max
Disable Time	100nS Max	100nS Max

Dimensions (mm)



Connections

Pin 1	Enable / Disable
Pin 7	Ground
Pin 8	Output
Pin 14	Vdd



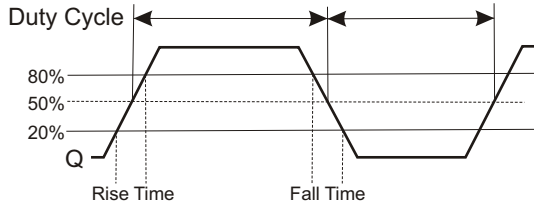
Absolute Maximum Ratings

Maximum Storage Temp	-55°C ~ +125°C
Voltage (VDD)	7.0 VDC
Input Voltage	-0.5Vdc ~ Vdd+0.5Vdc

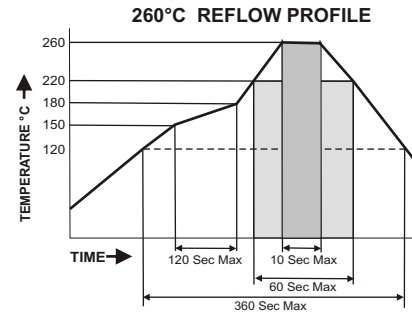
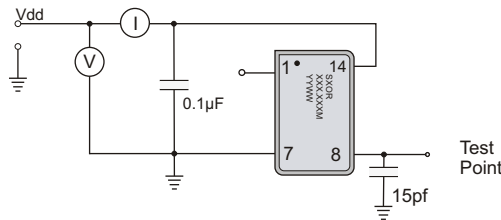
Environmental And Mechanical

Temperature	10 Cycles of -30°C (30Mins), Normal (1Hr), 85°C (30Mins), Normal (1Hr)
Shock	Accelerated at 1000G for 1mS in each perpendicular axis.
Vibration	4 Cycles of 20G acceleration at 20 - 2,000Hz within 4 Minutes in each perpendicular axis.
Solder	Peak Temperature of 260°C Max for 10 Seconds with preheat of 160°C for 90±10% for 10 Seconds for a Maximum of 2 Cycles.

Waveform

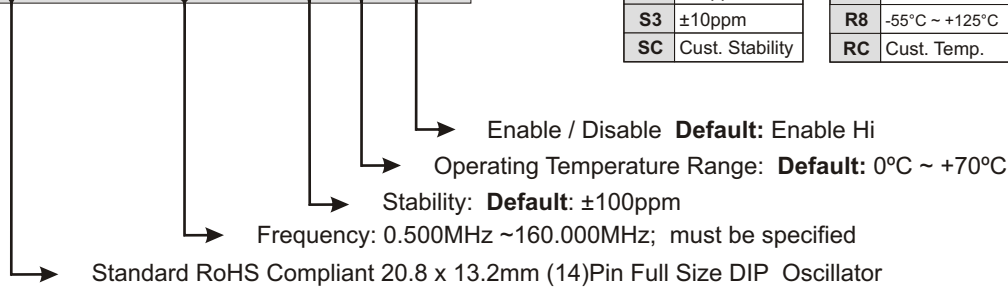


Test Circuit



Part Number

SXOR - XXX.XXX M-SX RX UX



Stability		OP Temp		Enable / Disable	
S1	±50ppm	R4	-20 ~ +70°C	U2	Lo Enable
S2	±25ppm	R6	-40 ~ +85°C		
S3	±10ppm	R8	-55°C ~ +125°C		
SC	Cust. Stability	RC	Cust. Temp.		

Example: **SXOR-100.000M-T** 100.000MHz, ±100ppm Oscillator operating at 0°C ~ +70°C
 Example: **SXOR-100.000M-S2R6-T** 100.000MHz, ±25ppm Oscillator operating at -40°C ~ +85°C